

GIANARELLI MANAGEMENT SERVICES PTY LTD
A.B.N. 53 628 092 439

Postal Address:
Po Box 880 Seymour 3660
Plant: Lot 5 Selectors Rd Seymour
www.gvrquarry.com.au

Telephone: 0357 924 332
Fax: 0357 921 388
Accounts: 0357 921 144
Email: gvrquarry@bigpond.com

SUSTAINABILITY REPORT
July 2015 – June 2016

**Section 77J(3) Mineral Resources (Sustainable
Development) Act 1990**

WORK AUTHORITY 781
GOULBURN VALLEY RESOURCES PTY LTD
(GIANARELLI MANAGEMENT SERVICES PTY LTD)

Introduction

This report is prepared in accordance with the notice issued by Earth Resources Regulation (ERR) under s77J(3) of the MRSDA 1990 on 22/12/2016, and has been made publicly available.

Work Authority holder	Gianarelli Management Services Pty Ltd are an integrated sand, gravel and concrete supplier based in Seymour.
Site details	WA781 is a sand and gravel extraction site located on private land approximately 5 km north of Seymour in the Mitchell Shire. It is operated in conjunction with the nearby WA232, also owned by Gianarelli Management Services Pty Ltd. A site location plan (Figure 1) is attached.

1. Economic benefits of the operation

Resource details	The resource consists of a Quaternary alluvial sand and gravel deposit (the 'Mangalore Gravels') within the present flood plain of the Goulburn River.
Product and market details	Gravel material, either processed or unprocessed is used for road making, while sand and gravel are utilised in concrete production. Gianarelli compete in the local market supplying crushed rock, aggregates, drainage and filter materials to government and municipal authorities and private contractors. They operate their own concrete plant in Seymour.
Employment	There are eleven full time staff employed, with the operation encompassing both WA781 and WA232.

2. Environmental management

2.1 Overview of approved environmental management plan

Details of approved environmental management plan	The approved Work Plan includes 'Safety and Environmental Controls' detailing measures to ensure impacts are minimised.
Key environmental risks	<p>The risks identified in the Work Plan are</p> <ul style="list-style-type: none">• Noise,• Air borne emissions,• Surface water impacts,• Erosion and sediment,• Waste products,• Groundwater impacts, and• Visual amenity

2.2 Activities and monitoring outcomes 2015-16

Environmental management activities	Environmental impacts were managed through the conduct of standard operational procedures and processes. No environmental incidents or complaints were recorded for the period.
-------------------------------------	---

3 Community engagement

3.1 Overview of community engagement plan

Approved community engagement plan	WA781 does not have a specific approved community engagement plan.
Promotion of activities	Gianarelli maintain an internet webpage (<i>GVR Quarry</i>) providing contact details (both phone and email) for any interested persons. In addition, contact details are displayed at the quarry site.

3.2 Overview of community engagement activities 2015-16

Details of activities	Stakeholder engagement, including with clients, suppliers, neighbours and regulators is conducted as part of normal operational activities on an as required basis.
Details of complaints and response actions	No complaints concerning the quarrying operations were received in the reporting period.

4 Rehabilitation

4.1 Final Concept Rehabilitation Plan

Site end use objective	The approved Work Plan includes a Rehabilitation Plan which states that at the completion of extractive activities the site will be returned to agricultural and recreational uses.
Schematic plan	A conceptual rehabilitation plan forms part of the approved Work Plan and is attached (Figure 3).
End use consultation	The Work Plan, including the Rehabilitation Plan, was referred to relevant stakeholders, including the Mitchell Shire, by ERR prior to approval.

4.2 Progressive rehabilitation milestones

Milestone details	Due to the uncertainty of extraction rates no specific progressive rehabilitation milestones have been set.
-------------------	---

4.3 Overview of rehabilitation activities 2015-16

Rehabilitation works undertaken	In accordance with the approved rehabilitation plan, progressive rehabilitation is undertaken when terminal faces are available and as part of the extraction cycle. Rehabilitation works highlighted on Figure 1 were undertaken during the reporting period.
Percentage of land rehabilitated to native vegetation	The approved rehabilitation plan is for a return to agricultural use combined with water bodies for recreation purposes. No native vegetation was used in the reporting period.
Assessment of rehabilitation success	Rehabilitation success is monitored as part of normal operational activities and where necessary remedial works are undertaken.

5 Compliance record

5.1 Corrective actions

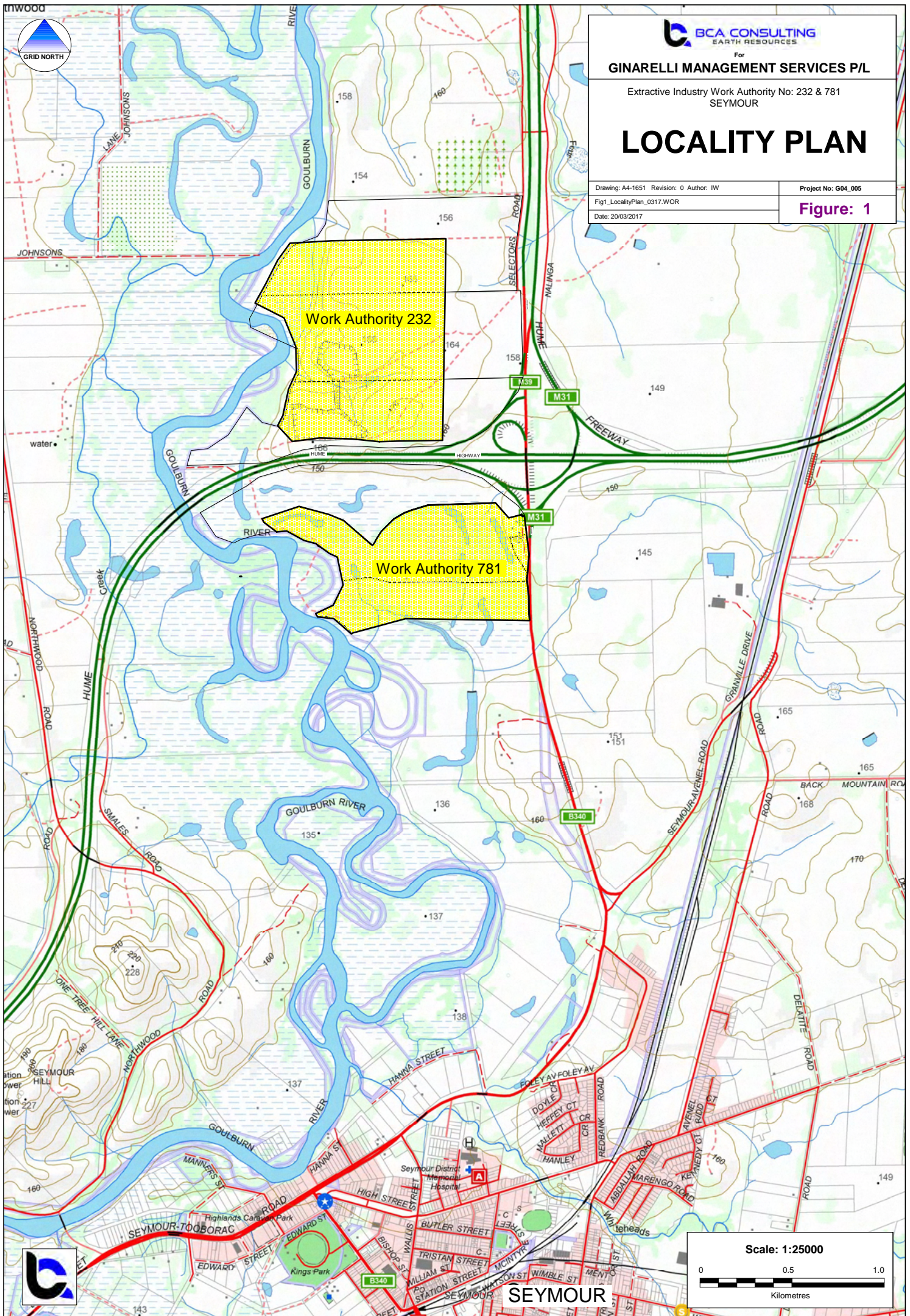
Details of any s110 MRSDA notices	s110 Notice JM40150292 was issued on 4 September 2015, and related to excavation in the floodplain of the Goulburn River.
Details of any corrective actions to notices	Following a review by ERR the notice was withdrawn on 15 April 2016.

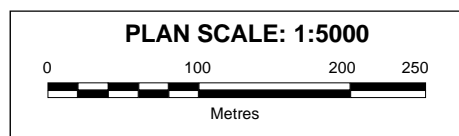
5.2 Reportable events

Details of any 'reportable events'	There were no 'reportable events' during the reporting period
Details of actions taken to address any events	Not applicable

6 Mine stability (Declared mines only)

Declared Mine report	WA781 is not a Declared Mine
----------------------	------------------------------





<p>For GINARELLI MANAGEMENT SERVICES P/L</p>		<p>Extractive Industry Work Authority No: 781 SEYMOUR</p>
<p>Drawing: A3-1653 Revision: 0 Author: IW</p>		<p>Project No: G04_005</p>
<p>Fig2_SitePlan781_0317.WOR</p>		<p>Figure: 2</p>
<p>Date: 20/03/2017</p>		<p>2016 SITE PHOTO PLAN Showing Progressive Rehabilitation (2015-2016)</p>



APPROXIMATE PHOTO SCALE

0 100 200 300


Metres

AERIAL PHOTOGRAPHY FLOWN BY LANDAIR SURVEYS 11/6/1996

LEGEND

——— PROPERTY BOUNDARY



 **BCA CONSULTING**
EARTH RESOURCES
for
GIANARELLI MANAGEMENT SERVICES P/L

Extractive Industry Work No : 781
SEYMOUR

**REHABILITATION
CONCEPT**

Author : LAS, I.W.	Project No. : G04_005
Drawing No. : A3-370	FIGURE 3
Revision : 1 Date : 20/03/2017	

